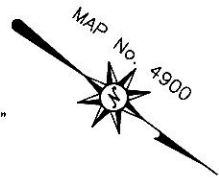


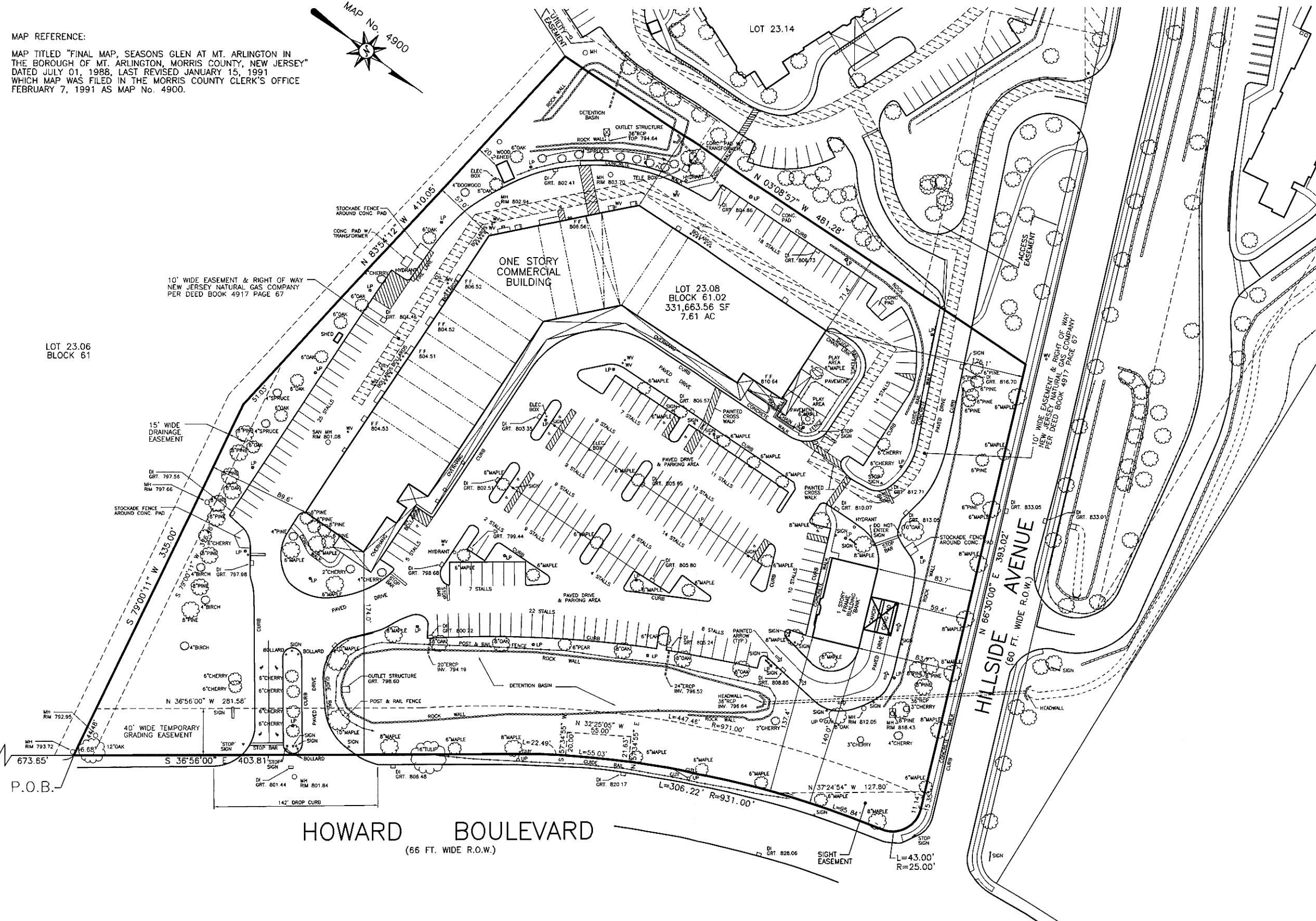
MAP REFERENCE:

MAP TITLED "FINAL MAP, SEASONS GLEN AT MT. ARLINGTON IN THE BOROUGH OF MT. ARLINGTON, MORRIS COUNTY, NEW JERSEY" DATED JULY 01, 1988, LAST REVISED JANUARY 15, 1991 WHICH MAP WAS FILED IN THE MORRIS COUNTY CLERK'S OFFICE FEBRUARY 7, 1991 AS MAP No. 4900.



SEASONS DRIVE

LOT 23.06
BLOCK 61



HOWARD BOULEVARD
(66 FT. WIDE R.O.W.)

HILLSIDE AVENUE
(60 FT. WIDE R.O.W.)

DRAWN BY: SP	CHECKED BY: WGH
JOB No. 08072	
BOOK	
SCALE 1"=40'	
GRAPHIC SCALE	
DATE FEBRUARY 9, 2010	
REVISIONS JULY 6, 2010 MARCH 2, 2011 APRIL 21, 2011	
CERTIFICATE OF AUTHORIZATION No. 24GA27959700	
NOTES	
<p>Murphy & Hollows Associates Inc. CIVIL ENGINEERING AND SURVEYING 321 ELM STREET, SPRING, NEW JERSEY 07980 (908) 580-1205 (908) 580-1600 FAX</p> <p>RETAIL UNIT PLAN FOR LOT 23.08 BLOCK 61.02 HOWARD BOULEVARD & HILLSIDE AVENUE BOROUGH OF MT. ARLINGTON MORRIS COUNTY NEW JERSEY SURVEY-EX. CONDITIONS</p> <p>AIDAN T. MURPHY N.J. LIC. PROFESSIONAL ENGINEER #21319 N.J. PROFESSIONAL PLANNER #2531</p> <p>WILLIAM G. HOLLOWES N.J. LIC. PROFESSIONAL ENGINEER & LAND SURVEYOR #27473 N.J. PROFESSIONAL PLANNER #2530</p>	
FILE 08072	SHEET 2 OF 4

PLEASE SEE "RETAIL SPACE AVAILABLE" LINK ON PROPERTY PAGE FOR ALL CURRENT TENANCIES.